

# TechLine

**Primer**

**Base Coat**

**Clear Coat**

*The Techline T3 is an economically priced gravity feed gun for use with a wide range of coatings from primers to top coats and stains. The T3 combines C.A.T. fine finish nozzles on a low cost gun body so you can achieve the best of both worlds -- economy and fine finish. Spray gun complies with all environmental regulations.*

## TechLine Features

- ➔ **45 PSI Inlet Pressure**
- ➔ **Patented 2 Piece Nozzle Design**
- ➔ **Air Adjusting Valve**
- ➔ **All Stainless Steel Fluid Passages**
- ➔ **HVLP - 65% Transfer Efficient or Better**

<u>PRIMER</u>	<u>1.9 mm - 2.2 mm</u>
<u>BASE COAT</u>	<u>1.5 mm</u>
<u>CLEAR COAT</u>	<u>1.3 mm</u>



## TechLine

### Gravity Cups



**700 mL**  
**(Plastic)**  
**51-400**



**700 mL**  
**(Aluminum)**  
**51-401**



**1000 mL**  
**(Aluminum)**  
**51-403**

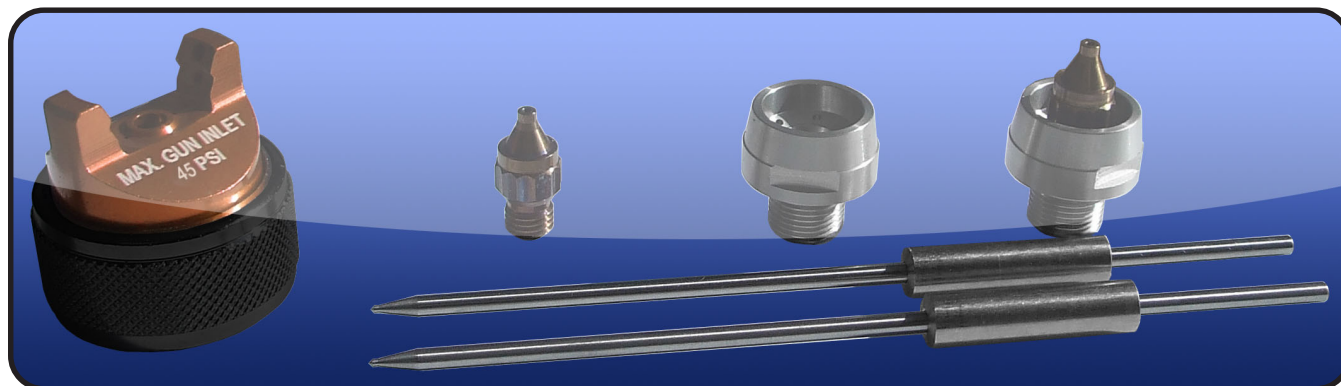
### 3M™PPS™ Starter Packs



**950 mL**  
**(Large 3M™PPS™)**  
**91-480**



**650 mL**  
**(Medium 3M™PPS™)**  
**91-481**

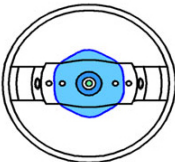


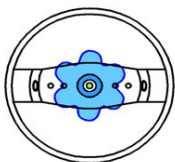




### TechLine Nozzle Chart

Material	Orifice Size	T3 HVLP
Stains, Dyes	1.0	45 PSI @ 13.5 CFM
Single Stage	1.3 - 1.4	45 PSI @ 13.5 CFM
Base Coat	1.3 - 1.4	45 PSI @ 13.5 CFM
Clear Coat	1.3 - 1.4	45 PSI @ 13.5 CFM
High Solid Clears	1.4 - 1.5	45 PSI @ 13.5 CFM
Sealer	1.4 - 1.7	45 PSI @ 13.5 CFM
Primer, Wash Primer, Epoxy	1.4 - 1.7	45 PSI @ 13.5 CFM

**Q: What makes our atomization superior?**

**A: Our 12 Point Balanced Plenum**

TechLine	Competition
 <p>12 point diffusion makes a more even cone of air as the fluid is atomized</p>  <p>The result is more uniform particles</p>  <p>A flatter more uniform finish is achieved</p>	 <p>Without 12 point diffusion, high and low spikes exist as the air atomizes the fluid</p>  <p>The result is very small and large particles</p>  <p>This will have a more orange peel finish</p>

### Nozzle Kits for TechLine

HVLP Kit	Orifice Size	Air Cap (Included)	Orifice (Tip) (Included)	Needle (Included)
TK1010	1.0 mm	23-1010	33-0210 1.0mm (.040")	40-P1310
TK1012	1.2 mm	23-1012	33-0212 1.2mm (.046")	40-P1312
TK1013	1.3 mm	23-1013	33-0213 1.3mm (.052")	40-P1313
TK1014	1.4 mm	23-1014	33-0214 1.4mm (.055")	40-P1314
TK1015	1.5 mm	23-1015	33-0215 1.5mm (.059")	40-P1315
TK1017	1.7 mm	23-1017	33-0217 1.7mm (.070")	40-P1317
TK1019	1.9 mm	23-1019	33-0219 1.9mm (.075")	40-P1319
TK1022	2.2 mm	23-1022	33-0222 2.2mm (.086")	40-P1322