

# Tomahawk

## 100 Series Conventional General Purpose

The Tomahawk is a lightweight, ergonomically designed, price competitive and high quality production sprayer. It is designed for the painter who wants a conventional gun for spraying a wide range of coatings from glue to fine finish... The Tomahawk can handle it all.

## Tomahawk Features

- Economically priced
- Lightweight and ergonomically designed spray gun
- General purpose spray gun with a wide range of fluid nozzles and air caps
- Built in air control
- Standard pressure setup (1.2 x 2263)
- Standard siphon setup (1.8 x 2266)



1 Quart  
Pressure Cup  
(Aluminum)  
**OTG-303R2**



1 Quart  
Siphon Cup  
(Aluminum)  
**OTG-301**

**Quality**  
**Simplicity**  
**Reliability**

### Available Outfits

#### 2 Quart Outfits

(Includes 5' Hose Assemblies)



2 Quart  
(Economy)  
**OTG-130**



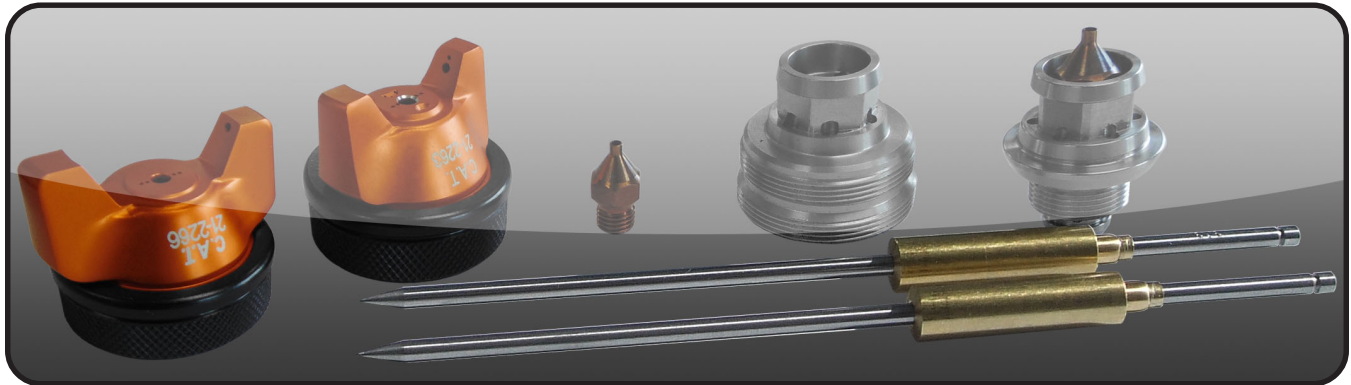
2 Quart  
(Bandit)  
**OTG-600**

#### Tank Outfits

Tank Outfits Include 25' Hose Assemblies and are available in 2.5 gal, 5 gal, 10 gal, 12.5 gal and 15 gal sizes.

(Includes 25' Hose Assemblies)





### Nozzle Chart for **Tomahawk**

| Material Type   | Fluid Orifice x Air Cap        | Maximum Pattern Width | Pressure / Siphon |
|---|--------------------------------|-----------------------|-------------------|
| <b>Very Thin</b><br>less than 16 sec. Zahn #2<br>inks, dyes, solvents, stains   | 0.6, 0.7 mm x 2163             | 8                     | P                 |
|   | 0.6, 0.7 mm x 2166             | 9                     | S                 |
|   | 0.6, 0.7 mm x 2266             | 12                    | S                 |
| <b>Thin</b><br>16 to 20 sec. Zahn #2<br>lacqers, enamels, primers,<br>sealers   | 0.6, 0.7, 1.0 mm x 2163        | 8                     | P                 |
|   | 0.6, 0.7, 1.0 mm x 2366        | 14                    | S                 |
|   | 0.6, 0.7, 1.0 mm x 2466        | 13                    | S                 |
| <b>Medium</b><br>21 to 30 sec. Zahn #2<br>automotive base coat<br>enamels, primers, epoxies,<br>urethanes, automotive<br>clear coat | 1.2, 1.3, 1.5, 1.8 mm x 2263   | 14                    | P                 |
|   | 1.2, 1.3, 1.5, 1.8 mm x 2266   | 10                    | S                 |
|   | 1.2, 1.3, 1.5, 1.8 mm x 2266-3 | 15                    | S                 |
|   | 1.2, 1.3, 1.5, 1.8 mm x 2466   | 13                    | S                 |
| <b>Heavy</b><br>over 30 sec. Zahn #2<br>heavy body primers, high<br>solid enamels, high solid<br>automotive coatings,<br>adhesives  | 1.5, 1.8 mm x 2466             | 13                    | S                 |

# Tomahawk

### Common Air Caps for **Tomahawk**

| Air Caps  | Pressure / Siphon | Max Inlet Pressure | CFM @ Max Inlet Pressure |
|-----------|-------------------|--------------------|--------------------------|
| 21-2263   | Pressure          | 50 PSI             | 14 CFM @ 50 PSI          |
| 21-2166   | Siphon            | 50 PSI             | 5 CFM @ 50 PSI           |
| 21-2266   | Siphon            | 50 PSI             | 12 CFM @ 50 PSI          |
| 21-2266-3 | Pressure          | 50 PSI             | 16.2 CFM @ 50 PSI        |
| 21-2366   | Siphon            | 50 PSI             | 12 CFM @ 50 PSI          |
| 21-2466   | Siphon            | 50 PSI             | 15 CFM @ 50 PSI          |