



HVLP AIR CAP AND FLUID NOZZLE CHART

| MODEL NO. | AIR CAPS | Press / Siphon | *MAX GUN INLET PRESS. FOR HVLP | FAN CONTROL | SCFM @ MAX GUN INLET | AIR CAP RING | AVAILABLE FLUID NOZZLES TIPS | NEEDLES / marking on needle |
|-----------|----------|----------------|--------------------------------|--------------|----------------------|--------------|------------------------------|-----------------------------|
| L300H | 23-1008 | pressure | 45 | 60-1502 | 13.5 | Included | 33-0208 .08mm (.022) | 40-1308 (308) |
| | 23-1010 | pressure | 45 | | 13.5 | | 33-0210 1.0mm (.040") | 40-1310 (310) |
| | 23-1013 | pressure | 45 | | 13.5 | | 33-0213 1.3mm (.052") | 40-1313 (313) |
| | 23-1014 | pressure | 45 | | 13.5 | | 33-0214 1.4mm (.055") | 40-1314 (314) |
| | 23-1015 | pressure | 45 | 60-1501 (#1) | 13.5 | | 33-0215 1.5mm (.059") | 40-1315 (315) |
| | 23-1017 | pressure | 45 | | 13.5 | | 33-0217 1.7mm (.070") | 40-1317 (317) |
| | 23-1019 | pressure | 45 | | 13.5 | | 33-0219 1.9mm (.075") | 40-1319 (319) |
| | 23-1022 | pressure | 45 | | 13.5 | | 33-0222 2.2mm (.086") | 40-1322 (322) |

*Note: Air cap test gages are available to confirm HVLP compliance.

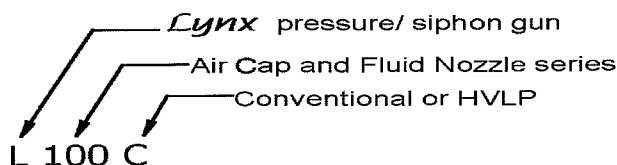
CONVENTIONAL AIR CAP AND FLUID NOZZLE CHART

| MODEL NO. | AIR CAPS | Press / Siphon | *SUGGESTED GUN INLET PRESS. | FAN CONTROL | SCFM | AIR CAP RING | AVAILABLE FLUID NOZZLES | NEEDLES / marking on needle |
|-----------|----------|----------------|-----------------------------|-------------|--------|--------------|-------------------------|-----------------------------|
| L300C | 23-2010 | p & s | 45-55 | 60-1500 | 9-10.7 | included | 33-0610 1.0mm (.040") | 40-1310 (310) |
| | 23-2013 | p & s | 45-55 | | 9-10.7 | | 33-0613 1.3mm (.052") | 40-1313 (313) |
| | 23-2014 | p & s | 45-55 | | 9-10.7 | | 33-0614 1.4mm (.055") | 40-1314 (314) |
| | 23-2016 | p & s | 45-55 | | 9-10.7 | | 33-0616 1.6mm (.063") | 40-1315 (315) |

Actual fluid nozzle and air cap combinations are determined by application (see application chart page 3)

*Gun inlet pressures may vary as required by application

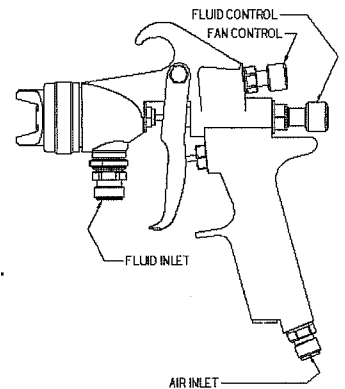
Coating Atomization Technologies
P.O.Box 17820 Boulder CO 80301
(888) 820-4498
Fax(303) 438-5708
www.sprayCAT.com



Operation and maintenance instructions for *Lynx* spray guns

Operation

1. Connect air supply hose at handle of gun.
2. Connect a pressurized fluid supply or paint siphon cup to the gun fluid inlet.
3. Fluid flow can be controlled using the fluid control knob, this restricts flow by limiting needle travel. It is best to control fluid flow by proper selection of fluid orifice size and use the fluid control knob to "fine tune flow rate".
4. Fan width can be adjusted using fan control knob. Turning the knob clockwise narrow the fan.



Maintenance

IMPORTANT! Routine cleaning and maintenance is essential to insure proper gun operation.

Several states prohibit spraying solvent into the atmosphere and require the use of a covered gun cleaner.

1. If a gun cleaner is being used, connect and clean the gun in the gun cleaner according to the manufactures instructions.
2. If a gun cleaner is not being used:
 - For pressure set-ups, remove air cap and clean separately using clean solvent.
 - Connect a pressurized solvent supply to the fluid inlet, trigger the gun allowing solvent to flow thru the gun until clean.
 - For siphon set-ups, first clean the siphon cup thoroughly then spray clean solvent thru the gun until clean.

NOTE: Gun head disassembly is not recommended for normal cleaning and maintenance.

Gun head disassembly and reassembly instructions

Gun head disassembly

To remove the nozzle carrier (6) and air cap adapter (7):

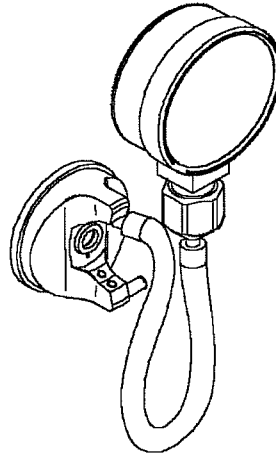
1. Remove the air cap (2), fluid nozzle tip (3), fluid nozzle body (4), and needle (14)
2. Remove the needle seal cartridge (24)
3. Loosen the locknut (10) and remove fluid inlet (11) using a 5/8" open-end wrench.
4. The nozzle carrier and air cap adapter will now slide forward from the gun handle (12).

Gun head reassembly

1. Install a new o-ring (8) on the air cap adapter
2. For model L300H only, install a new o-ring 98-8026 onto the air cap adapter
3. Install the thread locknut (10) onto the fluid inlet as far as possible.
4. Slide the nozzle carrier (6) into air cap adapter (7) and insert into the gun body as far as possible. Be sure the nozzle carrier extends into the hole at the back of the gun head. Install the needle seal (24) but do not tighten.
5. Rotate the nozzle carrier until the fluid inlet port in the nozzle carrier is aligned with the threaded hole in the gun body.
While in this position, insert the fluid inlet (11) and tighten firmly.
6. Tighten the needle seal (24) to approx. 12 ft-lb. torque.
7. Tighten the fluid inlet (11) to approx. 25 ft-lb. torque.
8. Tighten the locknut (10) to approx. 33 ft-lb. torque.

| ITEM NUMBER | PART NUMBER | DESCRIPTION |
|-------------|---------------------------|----------------------------|
| 1 | See Air Cap Chart | Air Cap Ring |
| 2 | See Air Cap Chart | Air Cap |
| 3 | See Air Cap Chart | Fluid Nozzle Tip |
| 4 | See <i>LYNX</i> Model no. | Fluid Nozzle Body |
| 5 | See <i>LYNX</i> Model no. | Gasket* |
| 6 | See <i>LYNX</i> Model no. | Nozzle Carrier |
| 7 | See <i>LYNX</i> Model no. | Air Cap Adapter |
| 8 | 60-131 | O-Ring* |
| 10 | 60-128 | Locknut |
| 11 | 60-126 | Fluid Inlet Fitting |
| | 60-1114 | <i>LYNX</i> Gun body HVLP |
| 12 | 60-1124 | <i>LYNX</i> Gun body CONV. |
| 13 | See Air Cap Chart | Fan Control Assembly |
| 14 | See Air Cap Chart | Fluid Needle |
| 15 | 60-202 | Fluid Control Knob |
| 16 | 60-205 | Spring Seat* |
| 17 | 60-204 | Needle Return Spring* |
| 18 | 60-201 | Rear Bushing |
| 19 | 60-119 | Seal* |
| 20 | 60-1520 | Air Valve Assembly |
| 21 | 60-302** | Air Valve Poppet |
| 22 | 60-125 | O-Ring* |
| 23 | 61-1003 | Air Valve Spring* |
| 24 | 60-1400* | Needle Seal Cartridge |
| 25 | 60-2101 | Trigger |
| 26 | 60-1510 | Air Control |
| 26A | 60-122 | Plug (optional) |
| 27 | 60-104 | Air Inlet Fitting |
| 28 | 60-1033 | Trigger Pivot Set |
| 29 | 98-109 | Allen Plug |
| 30 | 60-124 | Fluid Inlet Seal* |

| <i>LYNX</i> MODEL NO. | ITEM 4 | ITEM 5 | ITEM 6 | ITEM 7 |
|--------------------------|---------|----------|---------|--------|
| L300C | 33-2201 | 98-1024* | 60-L31C | 60-32C |
| L300H | 33-1201 | Not Used | 60-L31H | 60-32H |

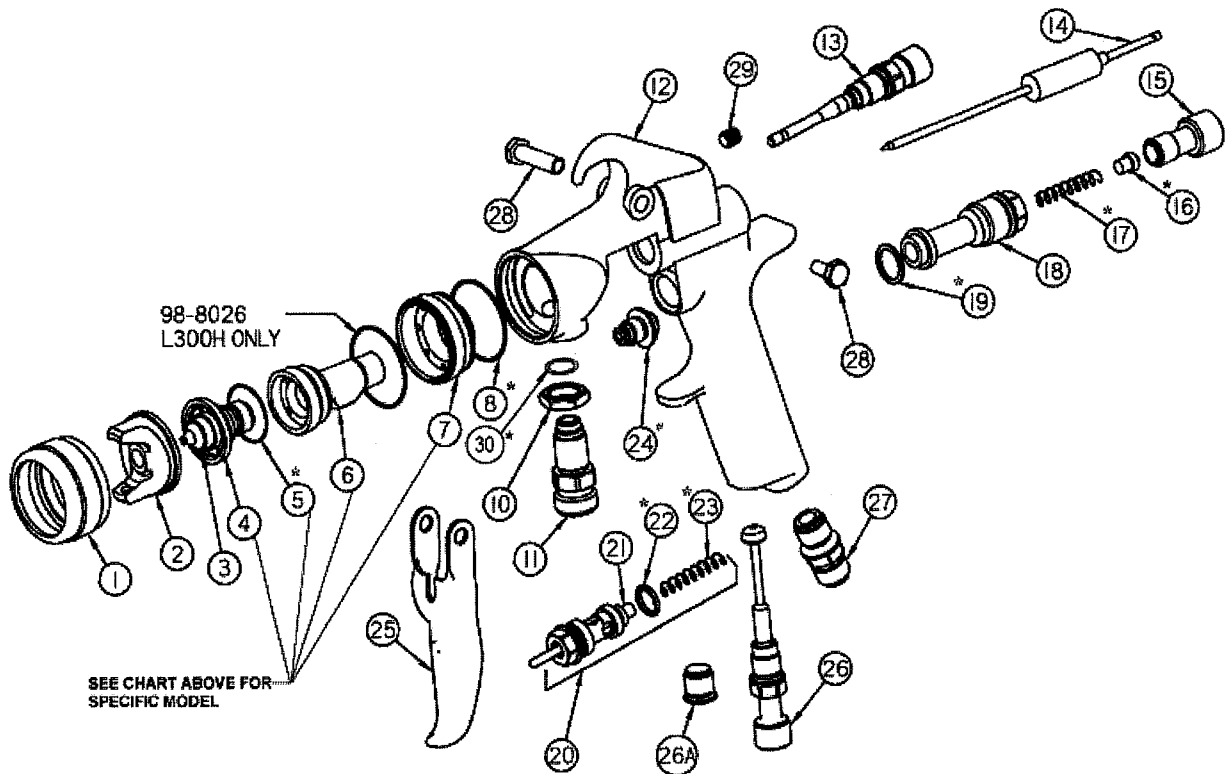


HVLV AIR CAP TEST GAGES

| | |
|----------------------|-----------|
| FOR L300H GUNS | 23-1010-G |
| | 23-1013-G |
| | 23-1014-G |
| | 23-1015-G |
| | 23-1017-G |
| | 23-1019-G |
| | 23-1022-G |

* Included in KIT NO. 10-106

** Included with Air Valve Assembly 60-1520



FLUID NOZZLE / AIR CAP SELECTION CHARTS

HVLP SPRAY GUNS

L300H

| MATERIAL TYPE | press./ siphon | fluid orifice x air cap | m axim u m pattern wid th |
|--|-------------------|----------------------------|---------------------------------|
| Very Thin less than 16 sec. Zahn # 2 inks , dyes, solvents, stains | P | .8 mm x 1010 | 11 |
| | P | 1.0 mm x 1010 | 11 |
| | | | |
| Thin 16 to 20 sec. Zahn # 2 lacquers, enamels, primers, sealers | P | 1.0 mm x 1010 | 11 |
| | P | 1.3 mm x 1013 | 11 |
| | | | |
| Medium 21 to 30 sec. Zahn # 2 automotive base coat enamels, primers epoxies, urethanes automotive clear coat | P | 1.3 mm x 1013 | 11 |
| | P | 1.5 mm x 1015 | 11 |
| | P | 1.7 mm x 1017 | 11 |
| | | | |
| Heavy over 30 sec. Zahn # 2 heavy body primers high solid enamels high solid automotive coatings adhesives | P | 1.5 mm x 1015 | 11 |
| | P | 1.7 mm x 1017 | 11 |
| | P | 1.9 mm x 1019 | 11 |
| | P | 2.2 mm x 1022 | 11 |
| | | | |

CONVENTIONAL SPRAY GUNS

L300C

| MATERIAL TYPE | press./ siphon | fluid orifice x air cap | m axim u m pattern wid th |
|--|-------------------|----------------------------|---------------------------------|
| Very Thin less than 16 sec. Zahn # 2 inks , dyes, solvents, stains | P | 1.0 mm x 2010 | 11 |
| Thin 16 to 20 sec. Zahn # 2 lacquers, enamels, primers, sealers | | | |
| | P | 1.0 mm x 2010 | 11 |
| | P | 1.3 mm x 2013 | 11 |
| Medium 21 to 30 sec. Zahn # 2 automotive base coat enamels, primers epoxies, urethanes automotive clear coat | | | |
| | P | 1.3 mm x 2013 | 11 |
| | P | 1.4 mm x 2014 | 11 |
| | P/S | 1.6 mm x 2016 | 11 |
| Heavy over 30 sec. Zahn # 2 heavy body primers high solid enamels high solid automotive coatings adhesives | | | |
| | P | 1.4 mm x 2014 | 11 |
| | P/S | 1.6 mm x 2016 | 11 |