

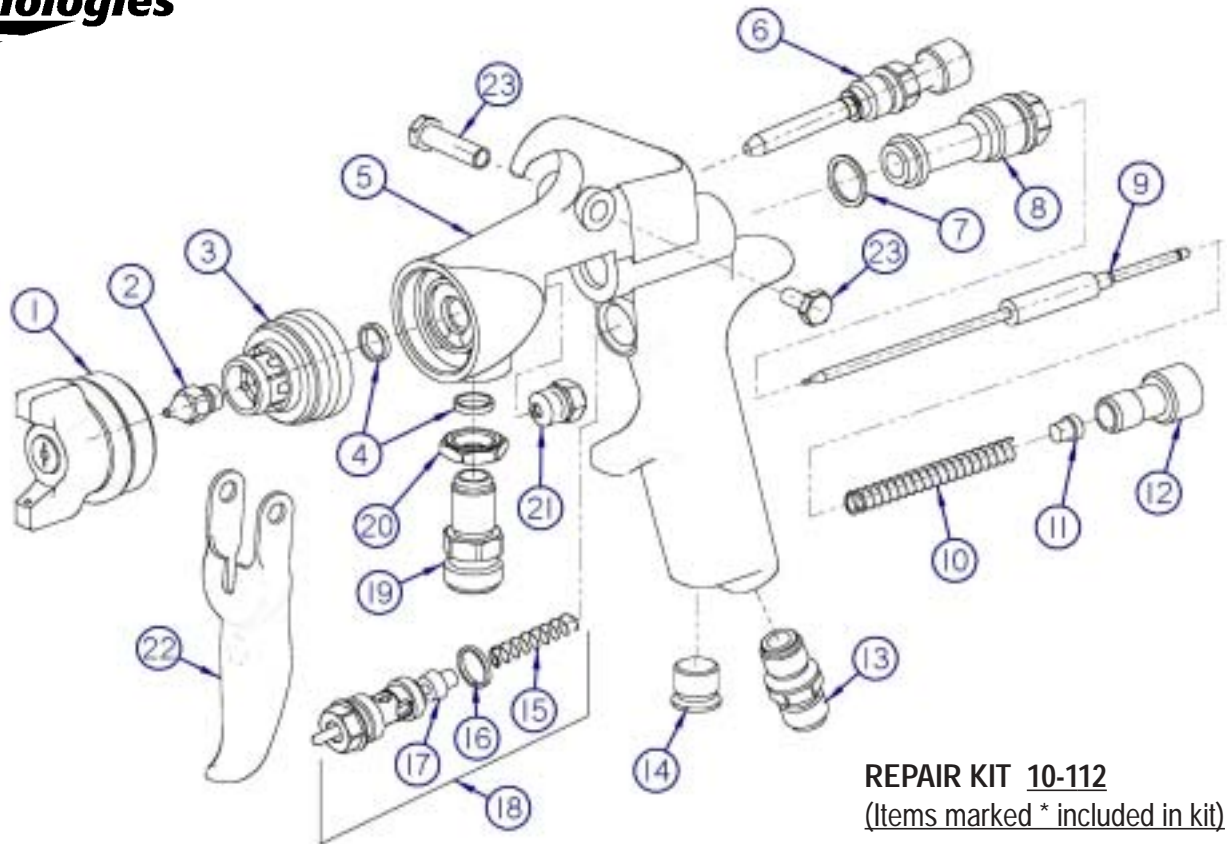


NOZZLE / NEEDLE CHART

MODEL NO.	AIR CAPS	Press / Siphon	*SUGGESTED GUN INLET PRESS.	FAN CONTROL	SCFM	AIR CAP RING	AVAILABLE FLUID NOZZLES	NEEDLES / marking on needle
T100C	2163	pressure	50	60-1505	8	Included		
	2263	pressure	50		14			
	2263-E	pressure	50		15		31-0606 0.6 mm (.022")	40-1107 (107)
	2363	pressure	50		13.6		31-0607 0.7mm (.028")	
	2166	siphon	50		5		31-0610 1.0mm (.040")	
	2266	siphon	50		12		31-0612 1.2mm (.046")	40-1110 (110)
	2266-3	siphon	50		16.2		31-0613 1.3mm (.052")	
	2366	siphon	50		12		31-0615 1.5mm (.059")	40-1115 (115)
	2466	siphon	50		15		31-0618 1.8mm (.070")	
	2167	pressure	50		14.5		31-0622 2.2mm (.086")	40-1122 (122)
	2267	pressure	50		15		31-0628 2.8mm (.110")	40-1128 (128)
	2168	pressure	50		14			
	200**	pressure	50		5.2			
	actual fluid nozzle and air cap combinations are determined by application							
*Gun inlet pressures may vary as required by application								
**200 Air cap requires P/N 21-1583 base & 21-1584 ring								

NOZZLE SELECTION CHART

MATERIAL TYPE	fluid orifice x air cap	maximum pattern width	MATERIAL TYPE	fluid orifice x air cap	maximum pattern width
Very Thin			Medium		
less than 16 sec. Zahn #2 inks, dyes, solvents, stains	0.6, 0.7 mm x 2163 0.6, 0.7 mm x 2166 0.6, 0.7 mm x 2266	8 9 12	21 to 30 sec. Zahn #2 enamels, primers epoxies, urethanes	1.2, 1.3, 1.5, 1.8 mm x 2263 1.2, 1.3, 1.5, 1.8 mm x 2266-3 1.2, 1.3, 1.5, 1.8 mm x 2466	14 15 13
Thin			Heavy		
16 to 20 sec. Zahn #2 lacquers, enamels, primers, sealers	0.6, 0.7, 1.0 mm x 2163 0.6, 0.7, 1.0 mm x 2366 0.6, 0.7, 1.0 mm x 2466	8 14 13	over 30 sec. Zahn #2 heavy body primers high solid enamels high solids epoxies /Zinc	1.5, 1.8mm x 2466 2.2mm x 2167 2.2mm x 2267 2.8mm x 2168	13 12 15 12



REPAIR KIT 10-112
(Items marked * included in kit)

ITEM #	DESCRIPTION	ITEM #	DESCRIPTION
1	21-xxxx Air Cap ass'y	13	60-0104 Air Inlet
2	31-06xx Fluid Tip	14	60-136 air control plug
3	60-15C head insert	15	61-1003 air valve spring *
4	60-137 seal ring-fluid *	16	60-125 gasket - air valve *
5	60-1106 gun handle	17	60-302 poppet ass'y
6	60-1505 fan control ass'y	18	60-1520 air valve asy
7	60-119 seal *	19	60-132 Fluid Inlet
8	60-0201 rear bushing	20	60-128 locknut
9	40-11xx needle ass'y	21	61-1026 seal ass'y *
10	60-204 needle return spring *	22	60-2101 trigger
11	60-205 spring seat *	23	61-1033 trigger stud set
12	60-0202 fluid control knob		

Maintenance

IMPORTANT! Routine cleaning and maintenance is essential to insure proper gun operation.

Several states prohibit spraying solvent into the atmosphere and require the use of a covered gun cleaner.

1. If a gun cleaner is being used, connect and clean the gun in the gun cleaner according to the manufactures instructions.

2. If a gun cleaner is not being used:

For pressure set-ups, remove air cap and clean separately using clean solvent.

Connect a pressurized solvent supply to the fluid inlet, trigger the gun allowing solvent to flow thru the gun until clean.

For siphon set-ups, first clean the siphon cup thoroughly then spray clean solvent thru the gun until clean.

Operation

1. Connect air supply hose at handle of gun.

2. Connect a pressurized fluid supply or paint siphon cup to the gun fluid inlet.

3. Fluid flow can be controlled using the fluid control knob, this restricts flow by limiting needle travel. It is best to control fluid flow by proper selection of fluid orifice size and use the fluid control knob to " fine tune flow rate".

4. Fan width can be adjusted using fan control knob. Turning the knob clockwise narrow the fan.